

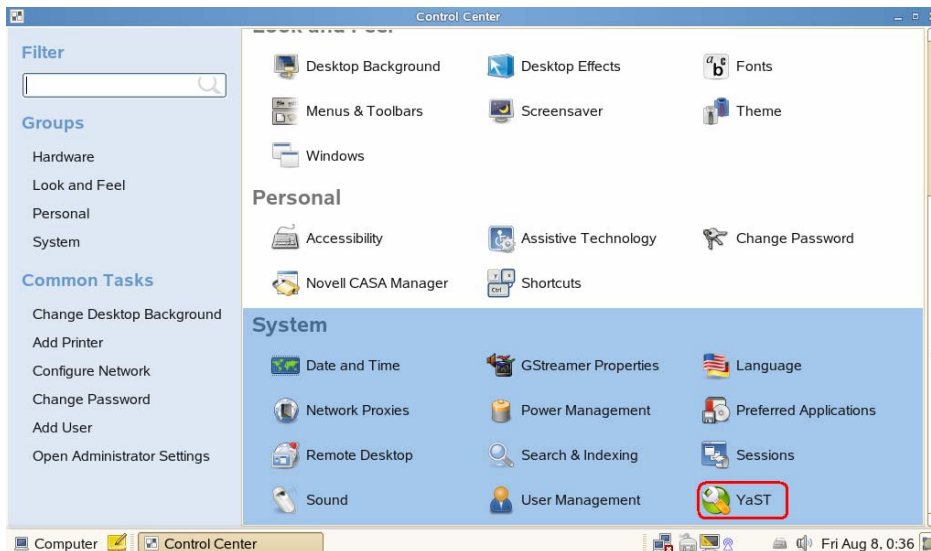
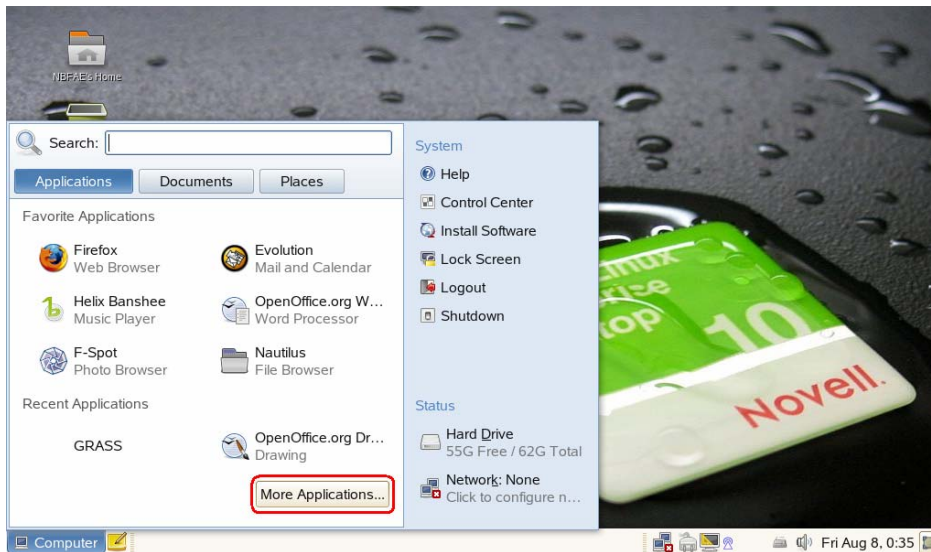
Installing RPM Files Rev.2

By MSI Notebook Technical support dept.

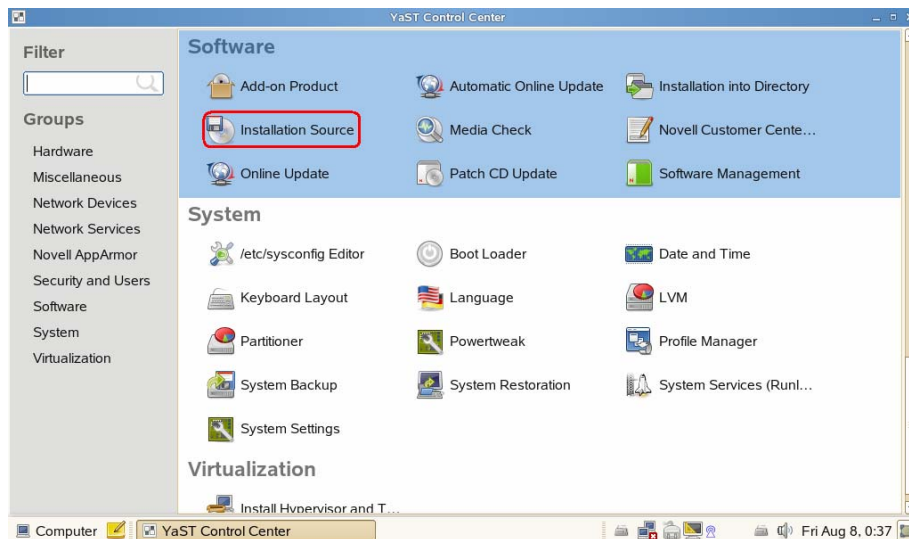
If you have downloaded an RPM, it's very simple to install. Here are three different ways to do this.

Install an RPM file by using YaST/Software Management

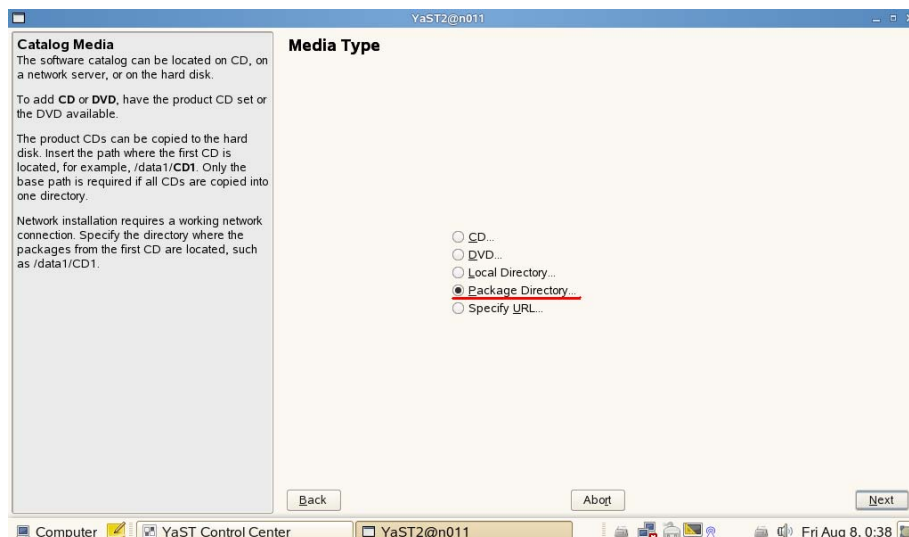
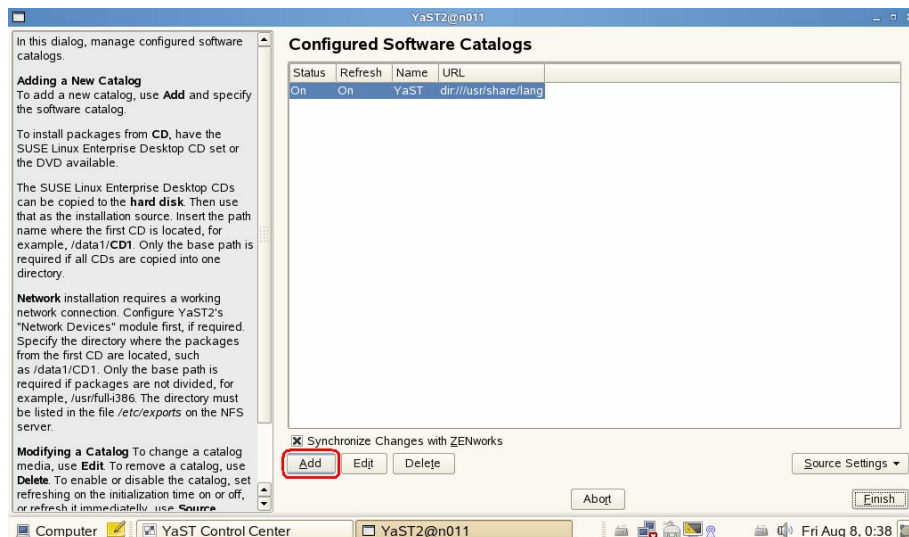
First, Create a YaST Installation Source for Auto Installation. Click “Computer” and select “More Applications.” Use the Filter or select the Group to “System” to run YaST.

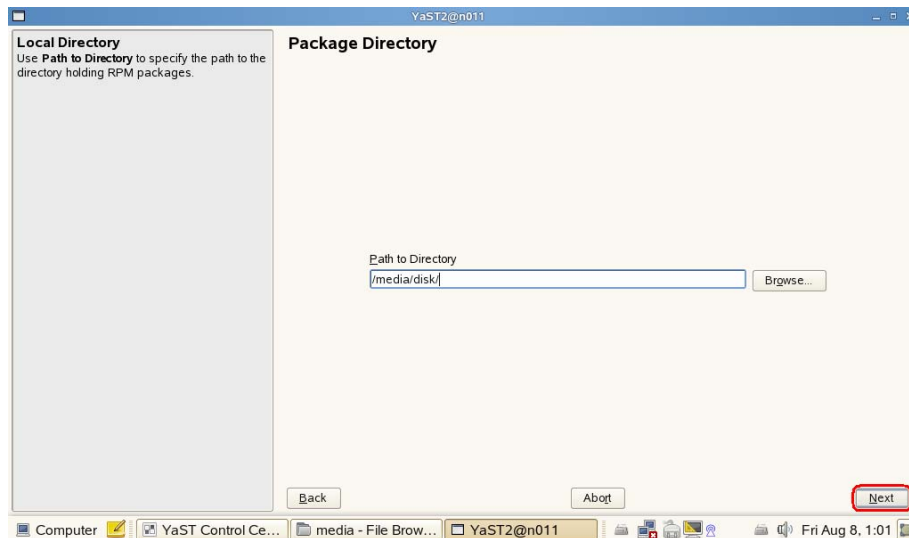


Under YaST, find and run “Installation Source.” (YaST → Software → Installation Source)

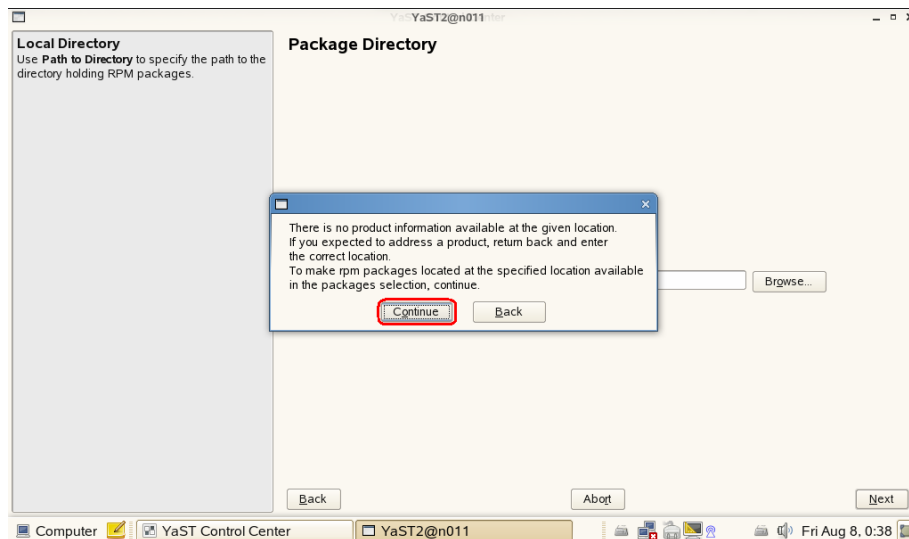


Now, start adding a new catalog. Select “Package Directory” and locate the directory to where the RPM file is.

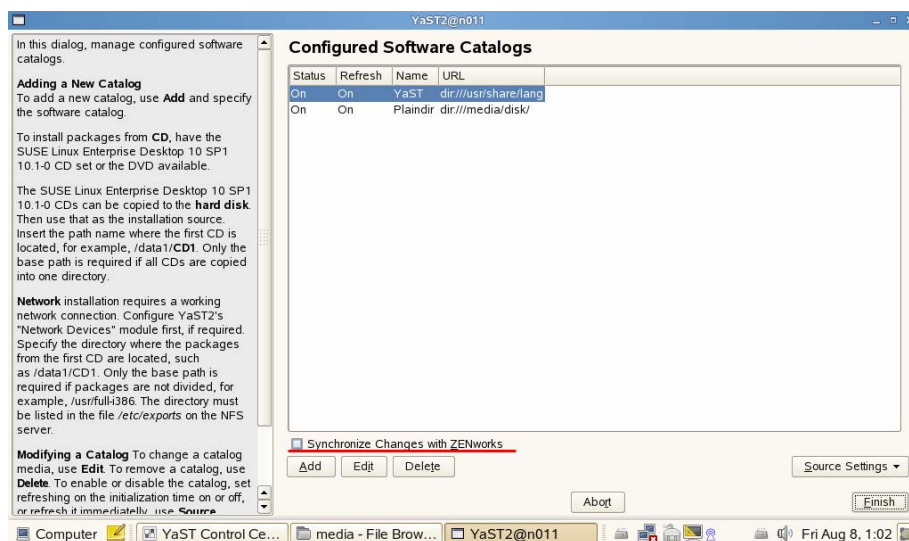




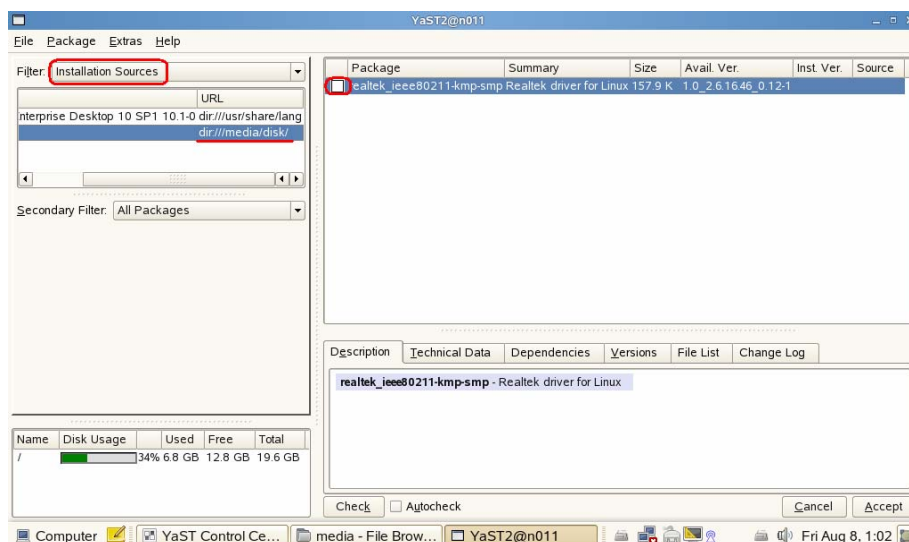
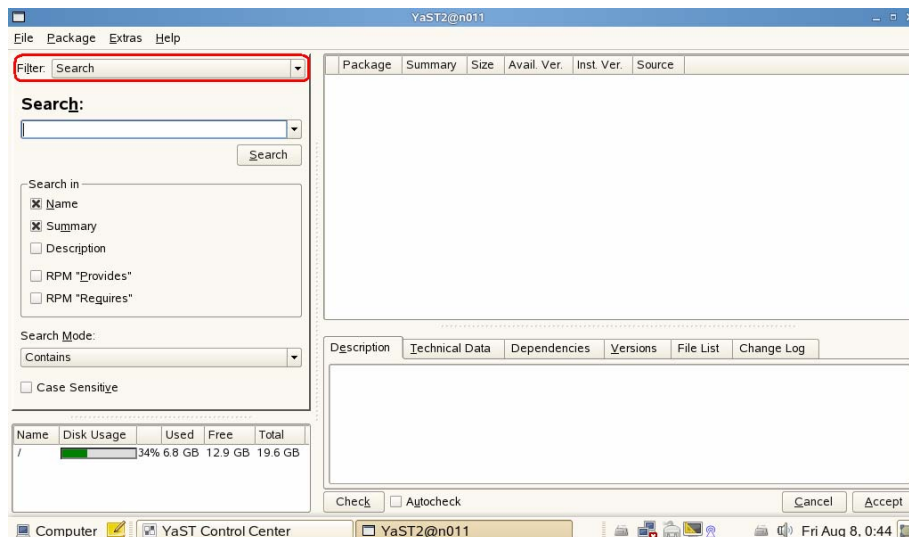
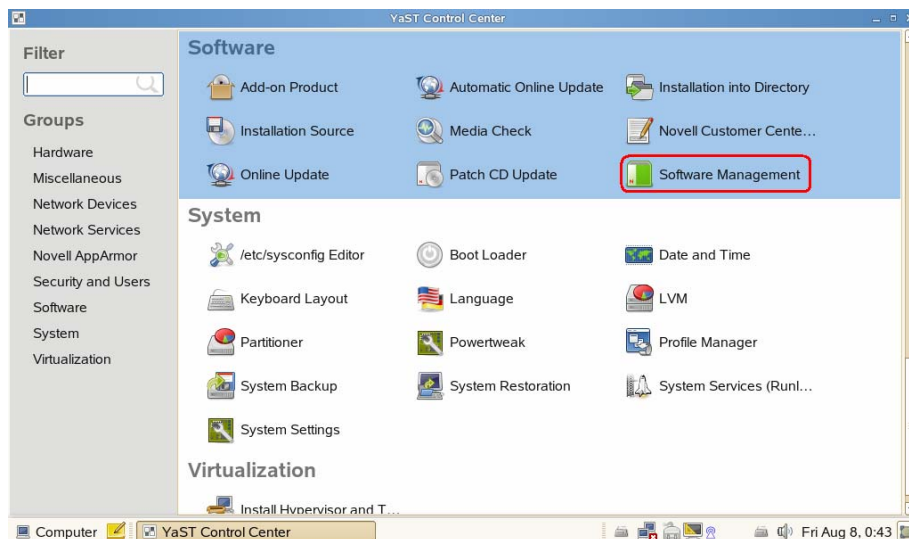
When it comes up a confirmation window, click “Continue.”



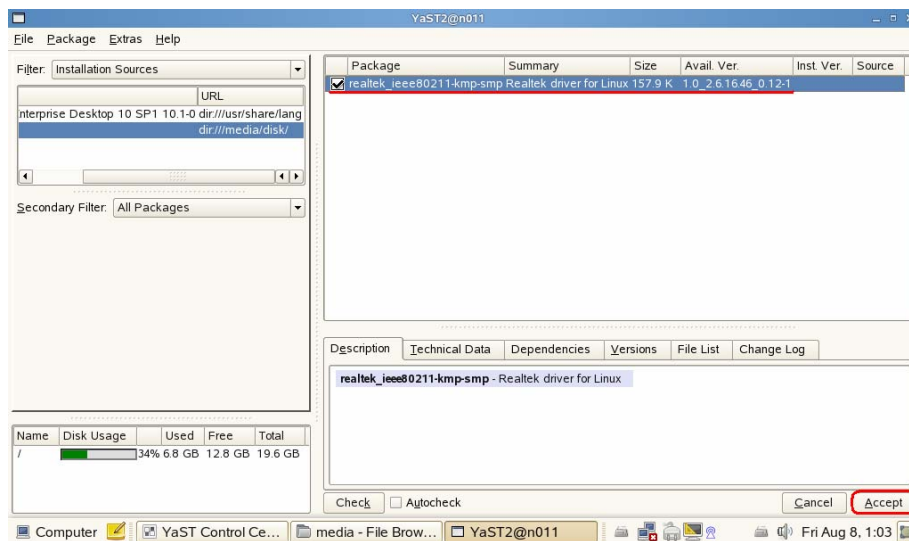
Uncheck “sync changes...” and then click “Finish” to complete it.



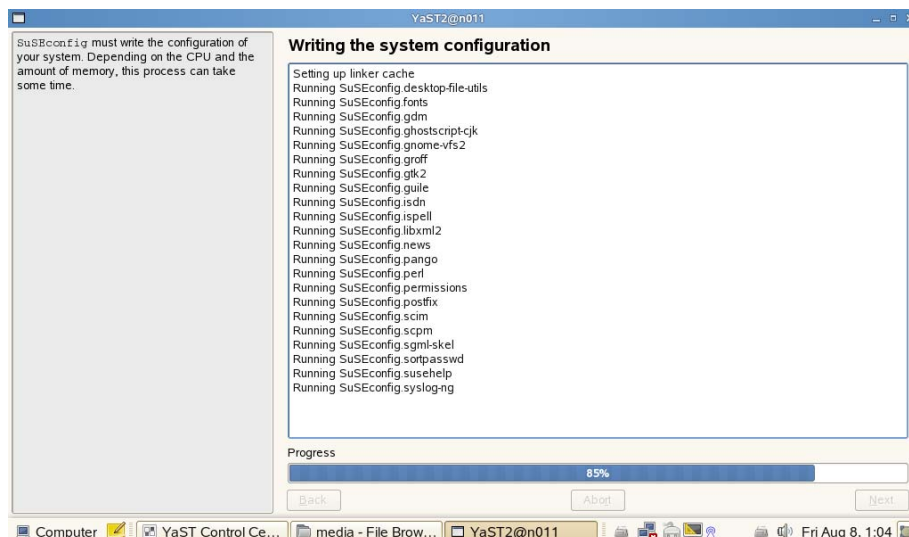
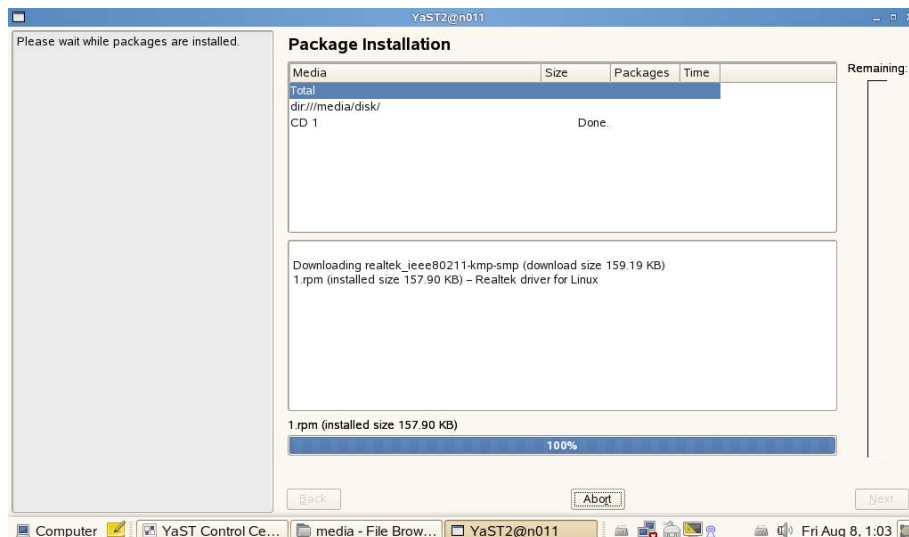
Now, we can install the rpm file through “Software Management.” Open Software Management (YaST → Software → Software Management) and change the filter to “install source.”



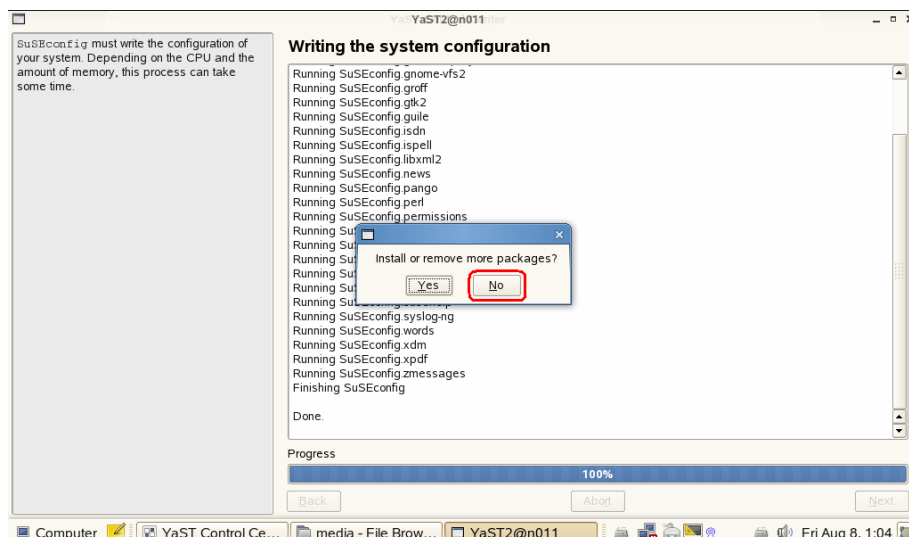
Next the filter, we can see an URL list. Choose the directory we just added in installation source and check the rpm packages that you want to install.



Now, the system start installing the rpm files



Click “No,” if you don’t need to install or remove more packages.



Install an rpm file from the command line

Run a terminal. Change the directory to where the RPM file is. Run 'su' command and then type in the root password to become a super user. Run the “rpm -Uvh <package name>” command. This process is demonstrated below:

```
NBFAE@n011:/media/disk> su
Password:
n011:/media/disk # rpm -Uvh 1.rpm
Preparing... ##### [100%]
1:realtek_ieee80211-kmp-s##### [100%]
n011:/media/disk #
```

To downgrade a utility/driver version or install an rpm file that is packaged based on a newer/older version of kernel,

Add a parameter “--force” to replace the rpm file

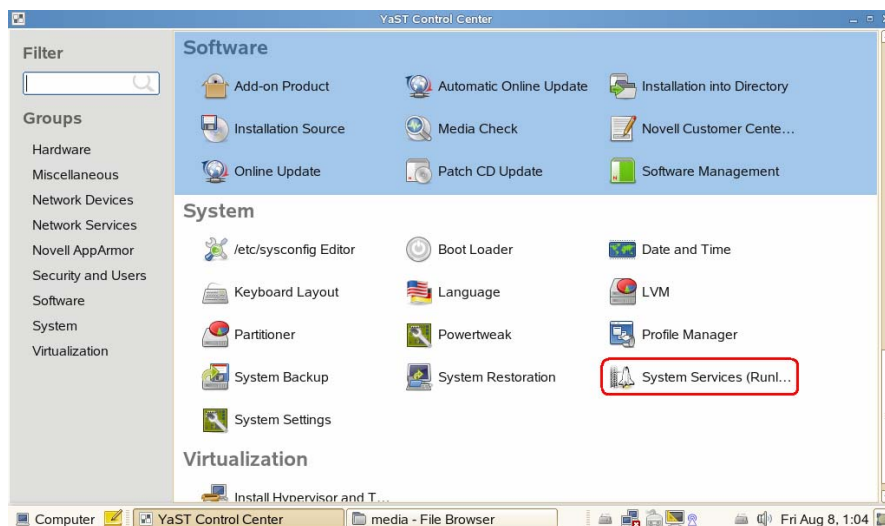
Add a parameter “--nodeps” to skip dependencies comparison

For example, add “--force” to replace “wpa_supplicant” to old version

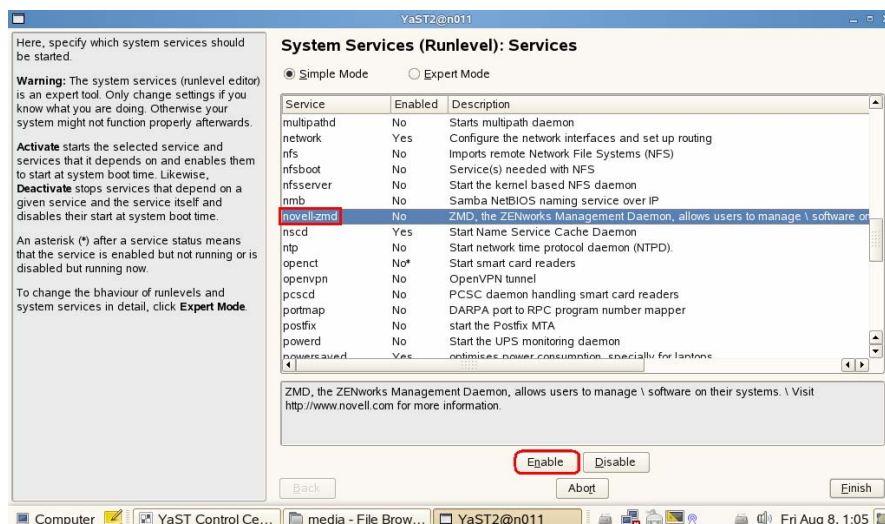
(rpm -Uvh --force wpa_supplicant-0.4.8-14.17.i586.rpm)

Install an rpm file with YaST

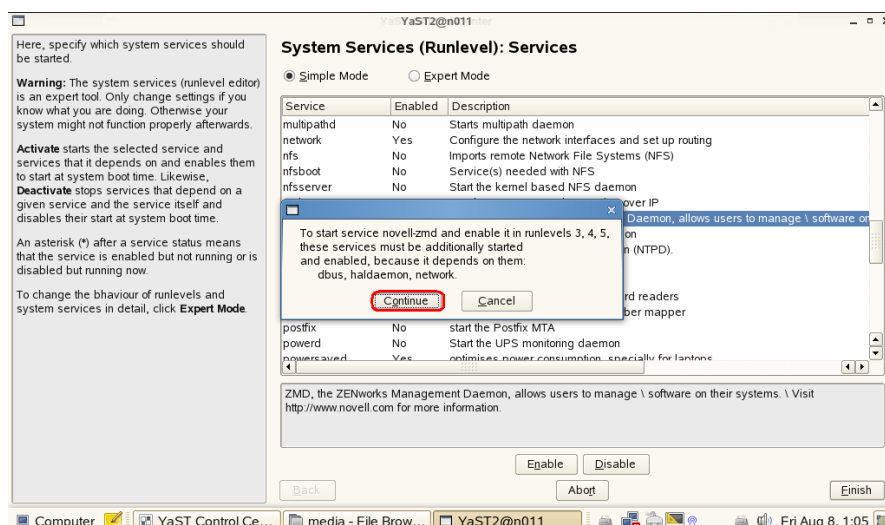
The easiest way is double click an rpm file and install it. However, we need to confirm that the ZMD is enabled first. Under YaST, find and run “System Services” (YaST → Software → System Services)

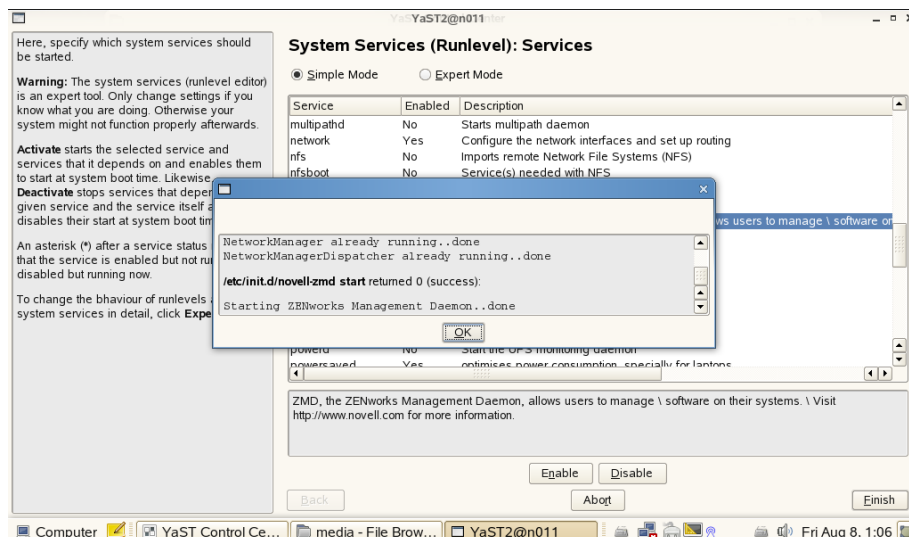


Scroll down the list and find “novell-zmd.” Click “Enable” if this service is disabled.

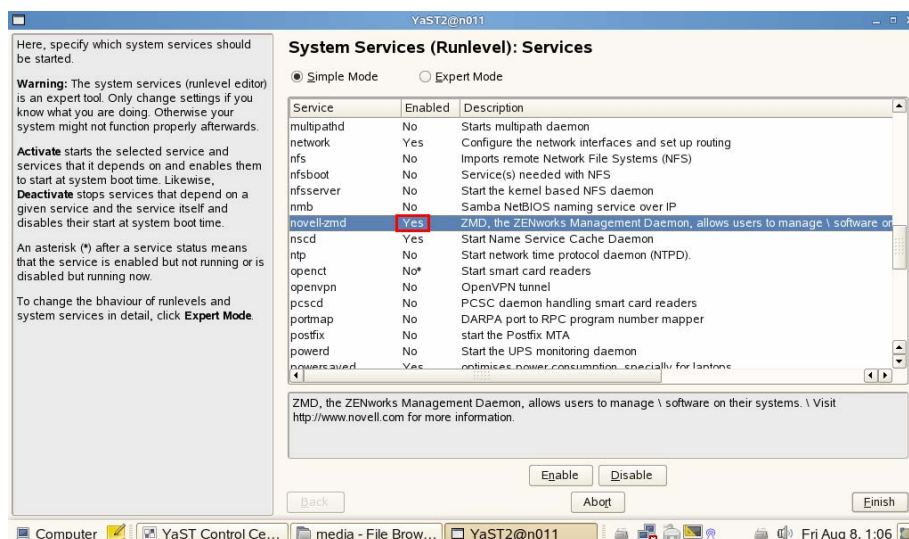


Click “Continue” & “OK” to go on next step

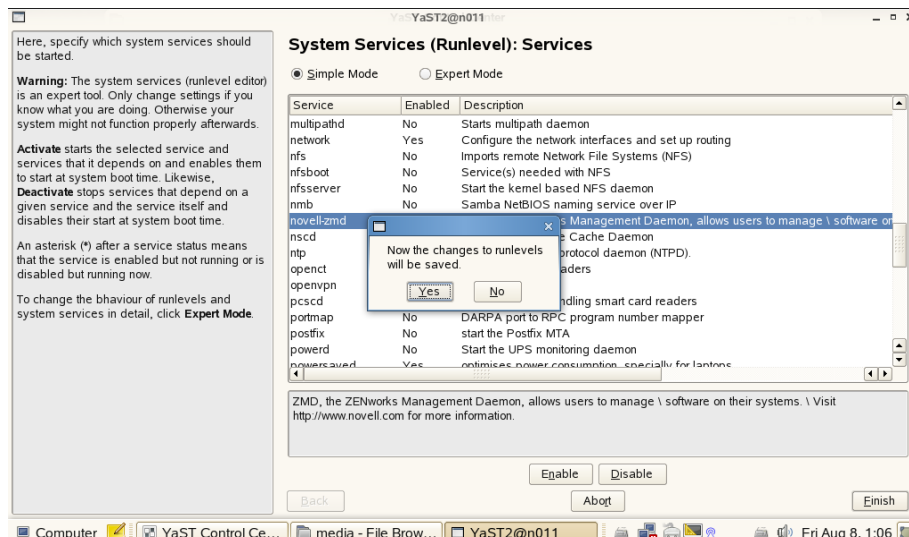




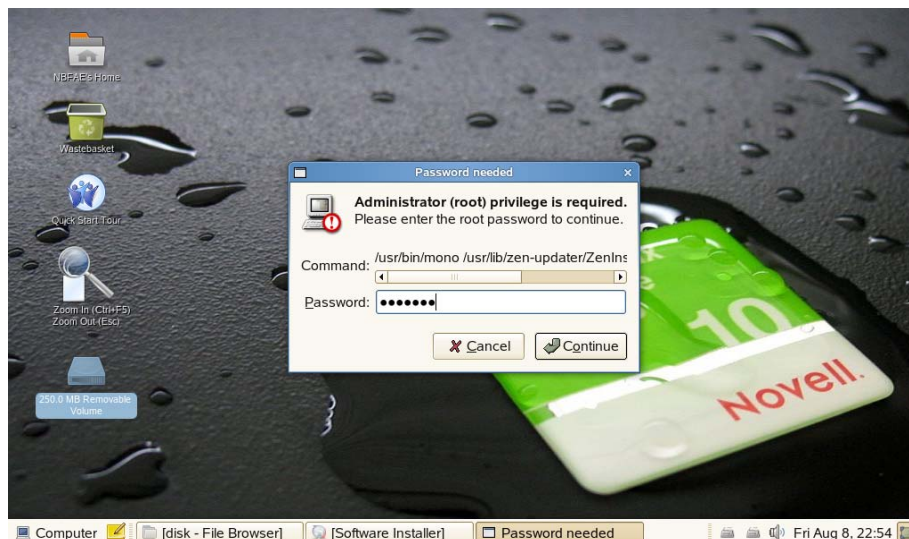
Now, you can see it is enabled.



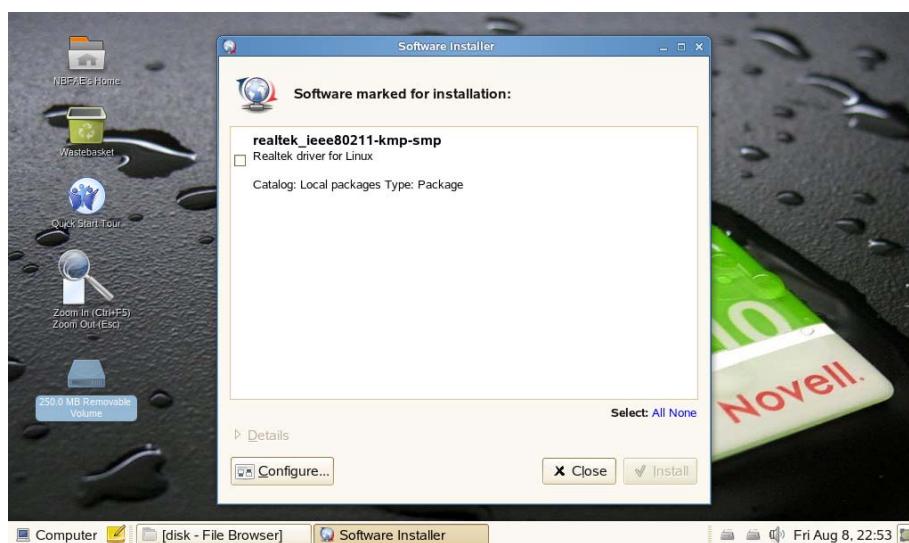
Click "Finish" to complete the setting.



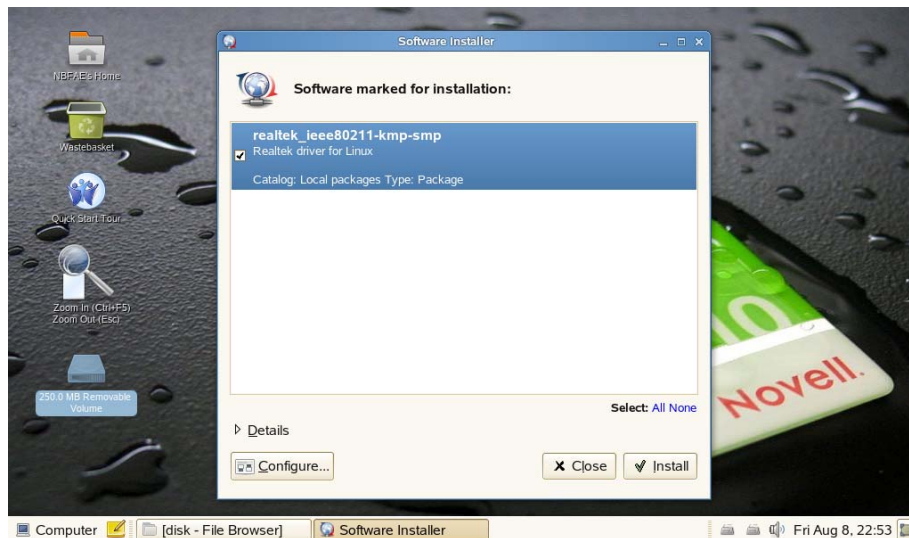
Double click the rpm file and enter the root password



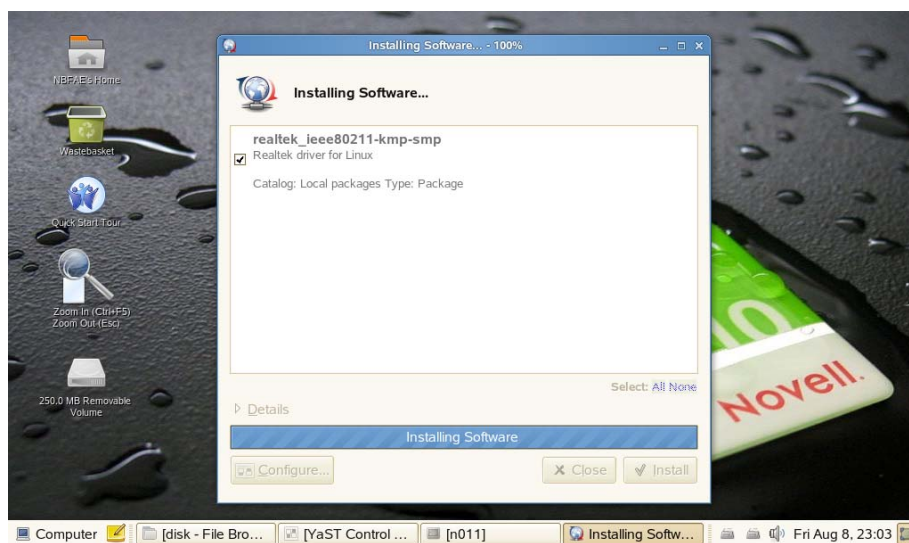
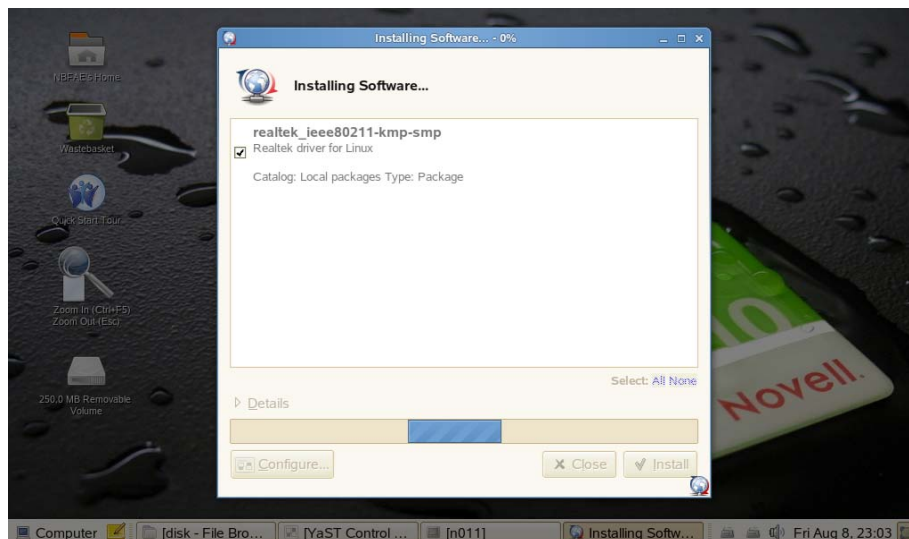
It will take a few minutes to load the rpm file under Software Installer

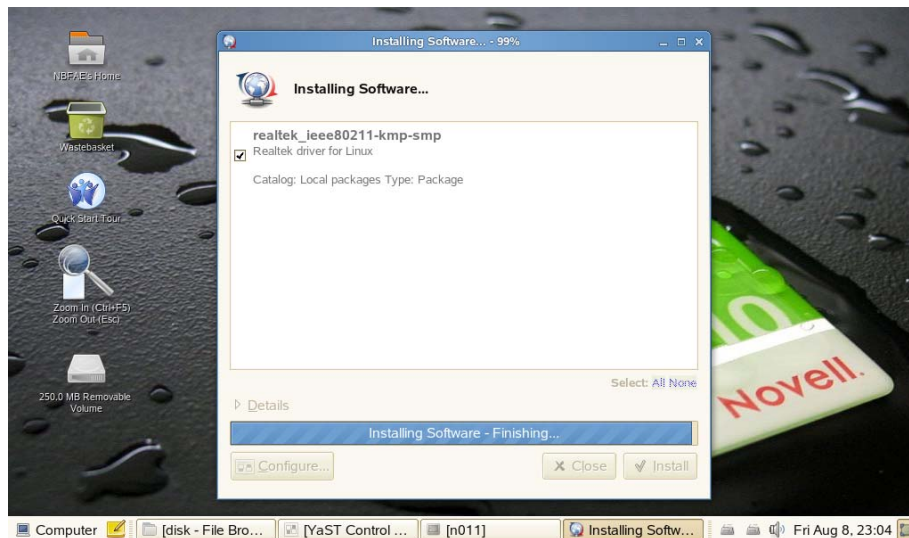


Check the rpm file and start install



Now, it starts installing





Click "Close" to finish the installation

